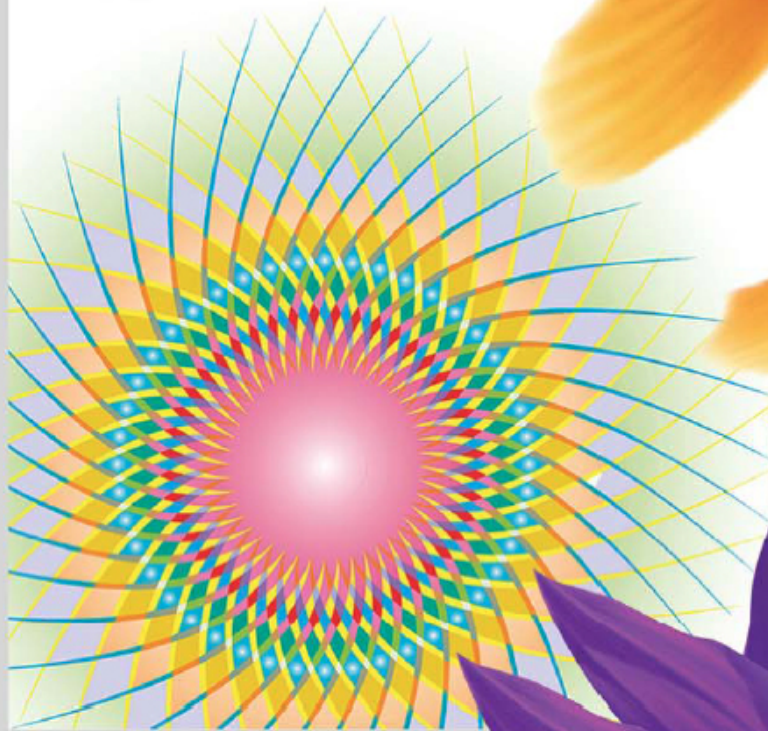
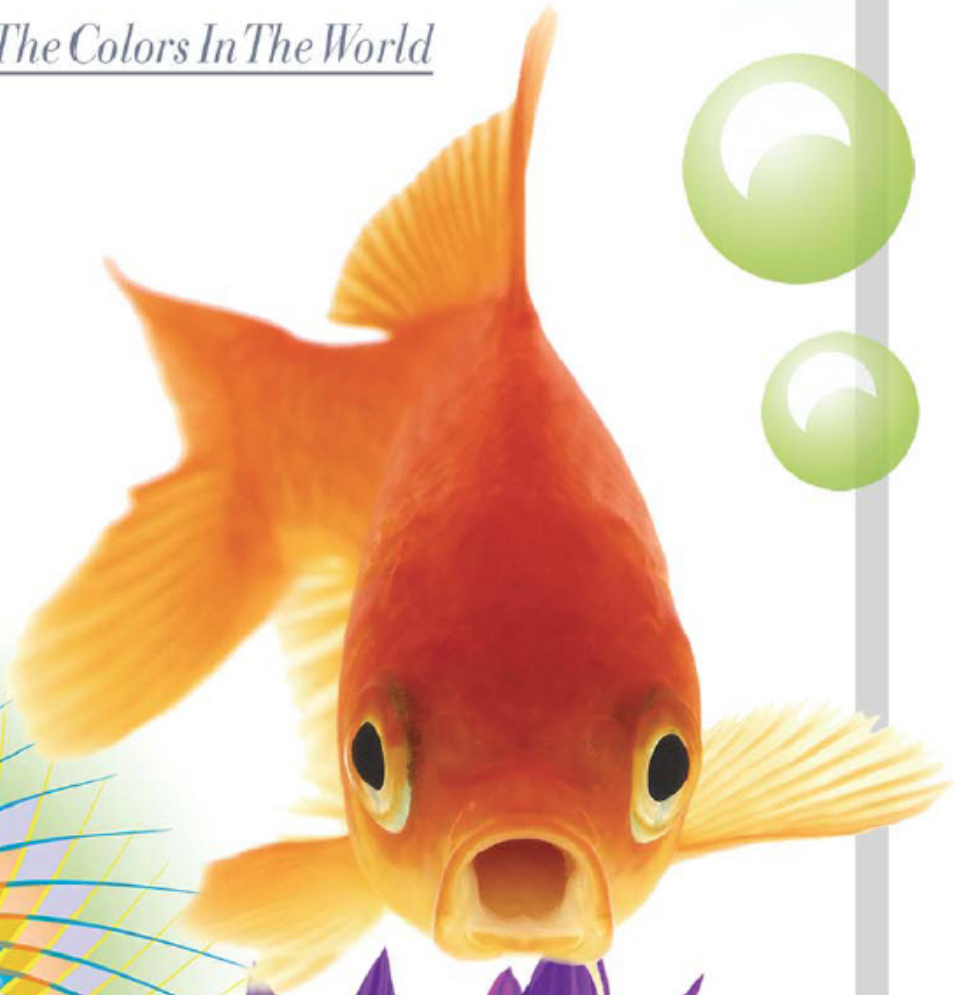
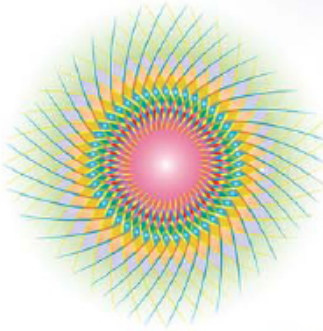


PRESENTING

# KALEIDO CHROME™

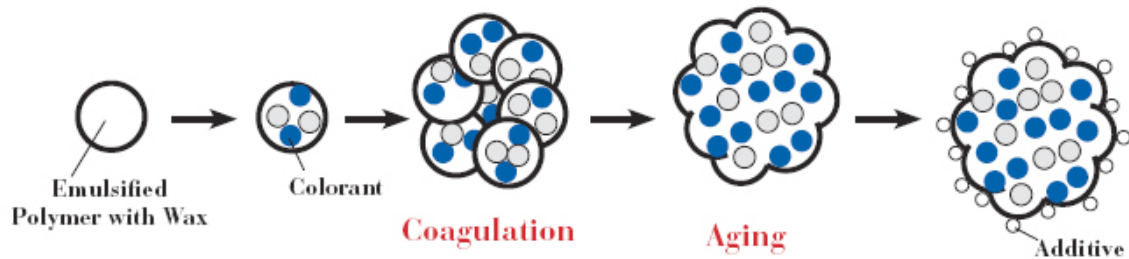
All The Colors In The World



## WHY KALEIDOCROME?

KALEIDOCROME offers a complete color solution including chemical toner, high precision OPC's and system components.

KALEIDOCROME: The Color Toners are created by a chemical process, actually growing the polymerized toner particles from the molecular level. This generates particles of highly controlled size, shape and structure.



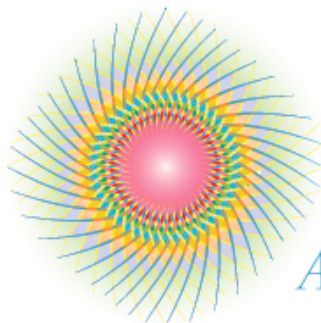
KALEIDOCROME's process can reliably produce toner particles as small as 4 microns (about half the size of the average pulverized toner particle) and that translates into improved image quality.

KALEIDOCROME's high precision OPC drums are designed for optimal performance with Kaleidochrome chemical color toner.

KALEIDOCROME's complete color system will provide you with the toner, OPC's, and system components needed to achieve the maximum performance of your equipment.

- *Improved Print Resolution*
- *Higher Cartridge Yields*
- *Better Transfer Efficiency*
- *Hardware Life Increased*
- *Lower Total Cost of Operation*

Try KALEIDOCROME's complete color solutions and you'll see greater precision, productivity, and economy in your prints, and all the colors in the world.



**KALEIDO  
CHROME™**  
*All The Colors In The World*